



2012-13 Aerial Photos

Aerial 1 : Land at Claygate Primary School



Esher

Page 379

Claygate



All boundaries are approximate

2012-13 Aerial Photos

Aerial 2 : Land at Claygate Primary School



Application Site Area

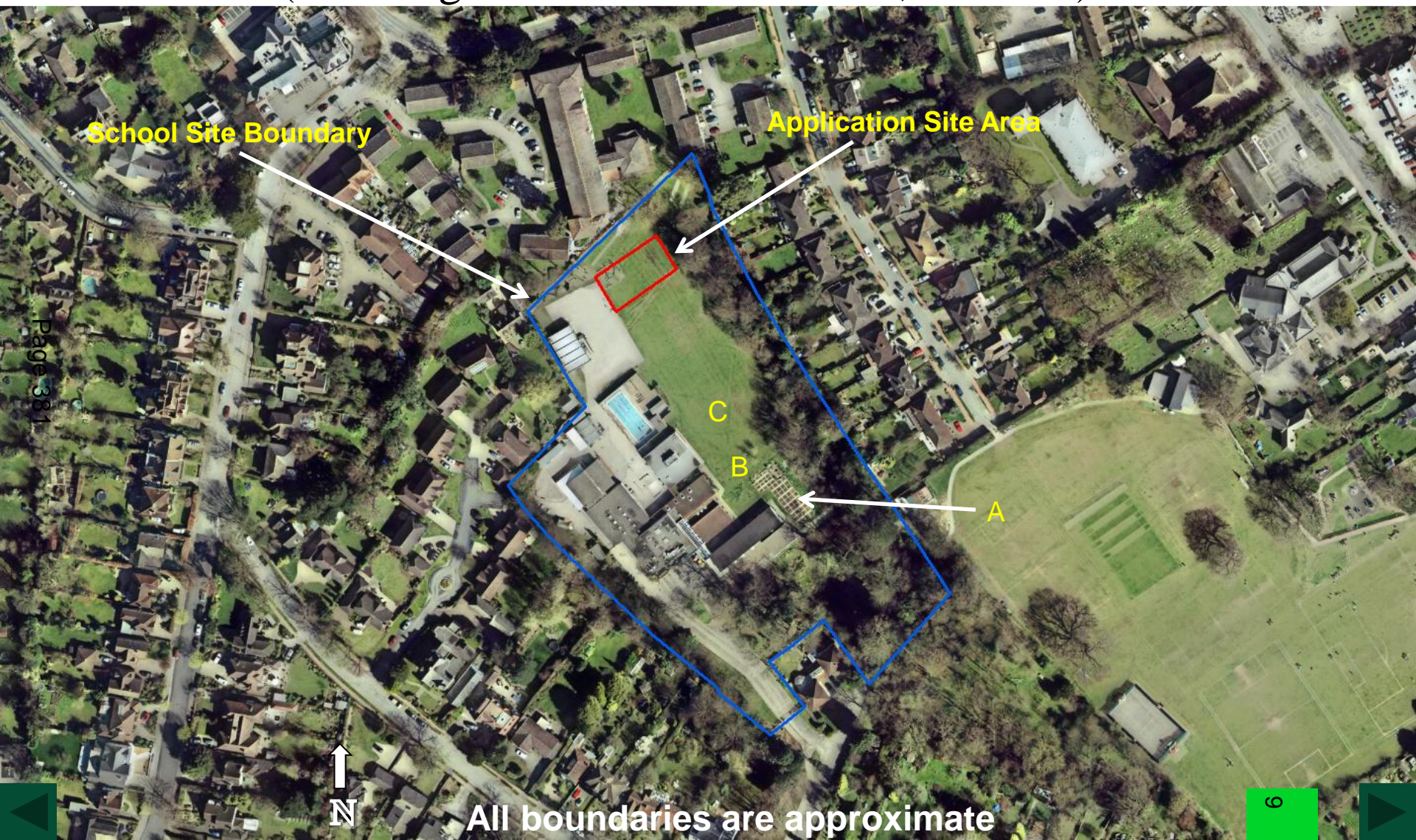
Page 380



All boundaries are approximate

2012-13 Aerial Photos

Aerial 3 : Land at Claygate Primary School (Showing alternative locations A, B and C)



Page 381

All boundaries are approximate

Figure 1 : Looking north from playing fields to location of proposed MUGA and adjoining housing, with The Firs development in the centre



Figure 2 : View to the northwest from the location of proposed MUGA



Figure 3 : Looking north from location of proposed MUGA



Figure 4 : View to east from hard play area towards the part of the trim rail to be relocated



Figure 5 : Looking west from the location of proposed MUGA



Figure 6 : Looking south from the location of the proposed MUGA



Figure 7 : Looking north from in front of the 2004/2005 extension with the M unit on the left



Figure 8 : View to south from playing field, looking toward 2004/2005 extension, with the chicken run and the allotment on the left



Figure 9 : Looking southwest towards the mid 1980s extension on the right and the 2004/2005 extension on the left, with the chicken run on the extreme left



Figure 10 : View looking west showing the M unit on the right and the mid 1980s extension on the left



This page is intentionally left blank